

Historic, archived document

Do not assume content reflects current scientific knowledge, policies, or practices.

1
26845
76.1251
Rev. '24

Office copy

U. S. DEPARTMENT OF
AGRICULTURE
FARMERS' BULLETIN No. 1251



STANDARD
VARIETIES OF
CHICKENS

V. THE BANTAM BREEDS
AND VARIETIES



BLACK COCHIN BANTAM, FEMALE



BANTAM CHICKENS have a strong appeal to grown people and to children alike. Interest in them is widespread. They are bred extensively for exhibition and are kept also as pets and as utility fowl. The standard breeds and varieties of bantams include such a wide range of shape, color, and other characteristics that any individual taste can be suited in selecting a variety.

This bulletin gives information concerning the general characteristics of bantams, together with a sufficient description of each standard breed and variety, to enable anyone desiring to keep these fowls to select the variety which will best suit his fancy and purpose.

show a considerable amount of broodiness but are not so persistent in this respect as the breeds already mentioned. The Game bantams, Rose Combs, Japanese, and Polish are generally classed as nonsitters, although occasional individuals will sit and hatch eggs.

TABLE QUALITY

Bantams, except for their small size, make desirable table fowl. Sometimes old birds, because they are small, have been mistaken for broilers and have created the impression that bantams are tough eating. At the same age, however, bantam chickens will be found to be just as tender and just as delicious eating, in spite of their small size, as any of the larger breeds.

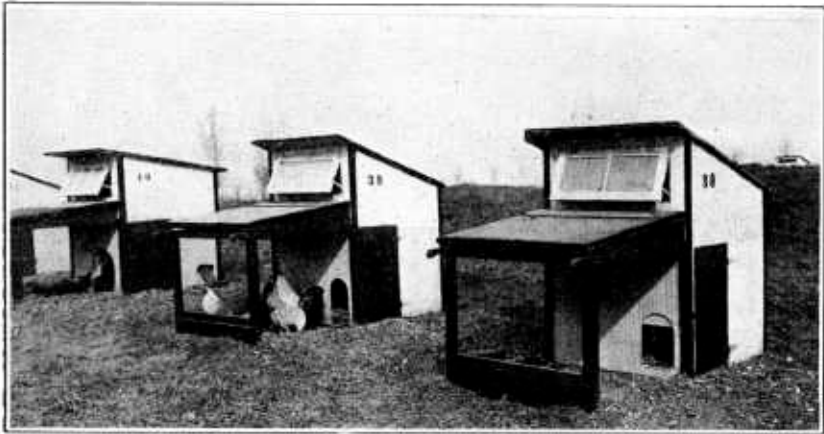


FIG. 1.—Convenient, movable bantam houses with covered runs attached

TENDENCY TO INCREASE IN SIZE

Bantams are bred for small size, and the Standard of Perfection prescribes certain weight requirements above which specimens are not supposed to go. There is always, however, a tendency for bantams to increase in size, which must be offset by careful breeding or by other means. The most effective means of securing and retaining small size is breeding for this purpose. This consists in the selection or purchase of birds for breeders which are of the size desired or even smaller.

Some breeders practice late hatching, knowing that late-hatched chicks do not as a rule attain the size of early hatched chicks. Scanty feeding is another practice resorted to by bantam raisers during the growing season to keep the young fowls from growing to as large a size as they otherwise would. These practices, however, must not be carried so far as to affect the health and vigor of the birds; they are measures of only temporary value and do not make any real progress toward reducing the size of future generations.

HOUSES AND RUNS

Bantams, like other fowl, will do best where they have plenty of room and where they have a considerable run, though they can be

stand confinement better. In many of the European countries small flocks of bantams are very commonly kept for the production of eggs for home use.

BANTAMS FOR THE CHILDREN

Because of their small size, bantams often have a particular appeal to children. Where it is desired to arouse the interest of children, especially small children, in poultry keeping, it is often advisable to procure a few bantams for them to feed and care for as their own property. The small size of the birds makes it easy for the children to handle them, and the care and possession of a few bantams will often develop in the child a real love for poultry. At the same time the fundamental principles of good poultry keeping can be learned with them just as well as with larger fowl.

CHARACTERISTICS OF BANTAMS

EGG PRODUCTION

Very few complete records are available regarding the number of eggs which a bantam hen will lay in a year. Bantams are often kept by fanciers who make no effort to obtain eggs except when eggs for hatching are desired, and practically no attention has been given to breeding for egg production. With careful attention to the feeding and breeding of the birds for egg production it should be possible to obtain an egg production considerably better than that indicated. As might be expected, the variation reported both within a breed or variety and between the different breeds and varieties is considerable. As a general, conservative statement 100 eggs per head per year is as high a production as can be reasonably expected, though individual bantam hens have laid as high as 150 or even 175 eggs in a year.

SIZE AND COLOR OF EGGS

Eggs laid by bantams vary in size also, according to the breed producing them, ranging from about 12 ounces a dozen from the smallest bantams to 18 or 20 ounces a dozen for the largest bantams.

In the breeding which has been done no particular attention has been paid to the color of bantam eggs. For this reason there is a considerable variation in egg color and often quite a wide variation among the different varieties of the same breed. The Game Bantams, Sebrights, Rose Combs, Japanese, Polish, Mille Fleur Booted, and Silkies produce eggs which are classed as white or which may be a little creamy or ivory in color, though occasional eggs are produced which are light brown. The Cochin and Brahma bantams, on the other hand, produce eggs which are brown, varying all the way from a deep brown to a very light brown, which may be nearly white.

BROODINESS

The Brahmas, Cochins, and Silkies are generally classed as broody breeds, and these, as a rule, make good sitters and good mothers. The Cochin bantam is the breed most generally kept for utility purposes in this country. Hens of these breeds are sometimes used to hatch pheasant eggs. The Sebrights, the Mille Fleurs, and Booted bantams

show a considerable amount of broodiness but are not so persistent in this respect as the breeds already mentioned. The Game bantams, Rose Combs, Japanese, and Polish are generally classed as nonsitters, although occasional individuals will sit and hatch eggs.

TABLE QUALITY

Bantams, except for their small size, make desirable table fowl. Sometimes old birds, because they are small, have been mistaken for broilers and have created the impression that bantams are tough eating. At the same age, however, bantam chickens will be found to be just as tender and just as delicious eating, in spite of their small size, as any of the larger breeds.

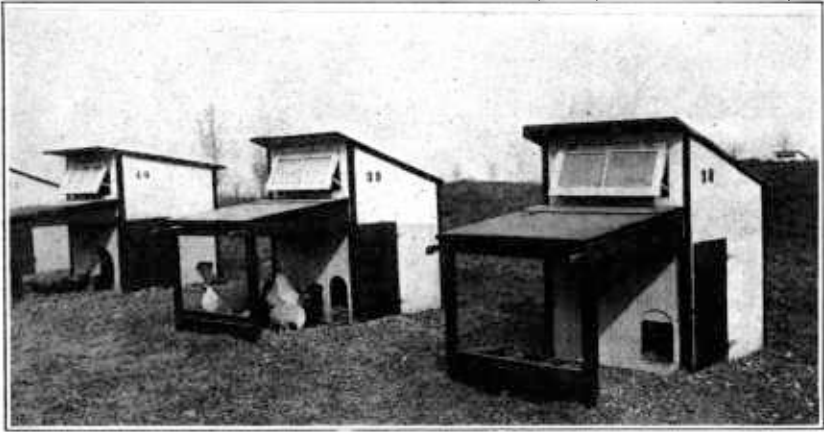


FIG. 1.—Convenient, movable bantam houses with covered runs attached

TENDENCY TO INCREASE IN SIZE

Bantams are bred for small size, and the Standard of Perfection prescribes certain weight requirements above which specimens are not supposed to go. There is always, however, a tendency for bantams to increase in size, which must be offset by careful breeding or by other means. The most effective means of securing and retaining small size is breeding for this purpose. This consists in the selection or purchase of birds for breeders which are of the size desired or even smaller.

Some breeders practice late hatching, knowing that late-hatched chicks do not as a rule attain the size of early hatched chicks. Scanty feeding is another practice resorted to by bantam raisers during the growing season to keep the young fowls from growing to as large a size as they otherwise would. These practices, however, must not be carried so far as to affect the health and vigor of the birds; they are measures of only temporary value and do not make any real progress toward reducing the size of future generations.

HOUSES AND RUNS

Bantams, like other fowl, will do best where they have plenty of room and where they have a considerable run, though they can be

kept successfully in rather limited quarters. The house shown in Figure 1 is a good type of house for bantams. It is small enough to be picked up by the handles and moved, together with the attached run, to fresh ground. This house is 3 feet 10 inches wide by 4 feet 6 inches deep. It is 5 feet 6 inches high in front and 4 feet 5 inches high in the rear. The attached covered run is 3 feet 10 inches wide, the same as the house, and is 5 feet deep. The front of the run is 2 feet 8 inches high and where attached to the house is 3 feet high. Such a house and run will accommodate to advantage from 6 to 10 bantam hens and a male bird.

Figure 2 shows a larger bantam house divided into various pens or compartments in which different matings can be kept. Small yards are built in front of this house. The house itself is 4 feet 10

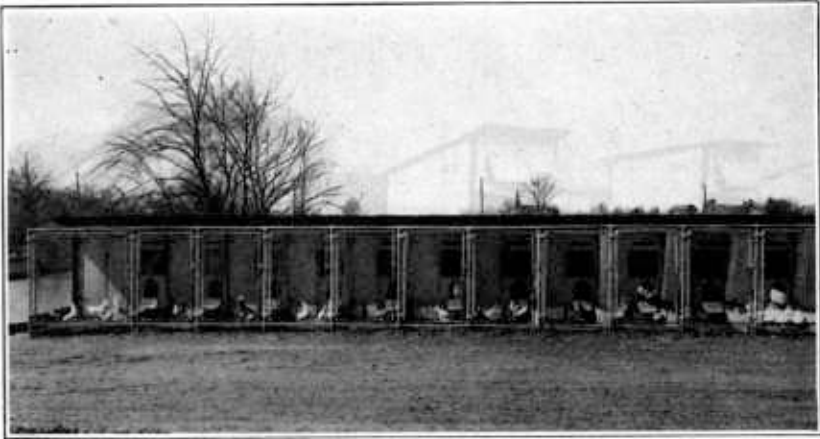


FIG. 2.—Large bantam house divided into pens for different matings

inches high in front and 3 feet 11 inches high in the rear. Each pen is 4 feet wide and 6 feet 4 inches deep. The run in front of each house is 6 feet long. Each of these pens or compartments will easily accommodate 10 females and a male.

In Figure 3 is shown a type of house especially suited for back yards. It is built low and the roof, both on the house and on the attached run, is necessarily hinged so that the work can be done from outside. Such a house is very suitable for bantams and is economical in construction.

FEED CONSUMPTION

Bantams differ considerably in size, and consequently in feed consumed, depending upon the breed. Definite information as to the exact number of pounds of feed consumed by a bantam hen in a year is difficult to obtain, since very few persons have kept any records of this kind. The best reports obtainable from a considerable number of bantam breeders indicate that a bantam hen will consume from 25 to 35 pounds of feed in the course of a year, about half as much as a hen of the Mediterranean breeds or about one-third as much as a hen of the larger breeds.

BREEDS AND VARIETIES

The appearance and characteristics of the principal breeds and varieties of bantams are described briefly in the following pages. For a description sufficiently detailed to enable one to breed exhibition specimens it will be necessary to refer to the American Standard of Perfection, a book published by the American Poultry Association and the guide by which all the poultry shows in the United States are judged. The breeds and varieties described in this bulletin are included in the Game Bantam, Oriental, Ornamental Bantam, and Miscellaneous classes as given in the American Standard of Perfection.

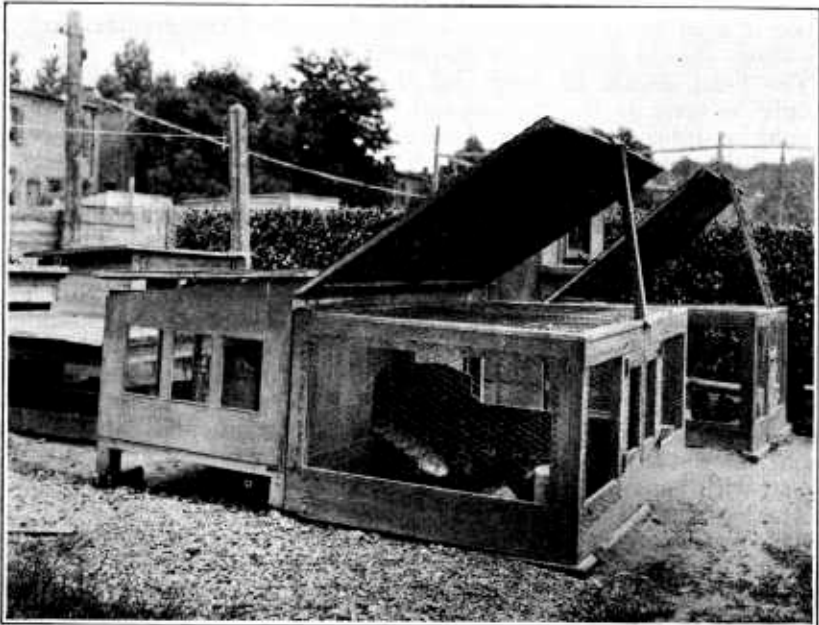


FIG. 3.—A good bantam house for use in a city back yard

The Game Bantam class includes the following standard varieties: Black-Breasted Red, Brown Red, Golden Duckwing, Silver Duckwing, Birchen, Red Pyle, White, and Black.

The Oriental class includes the Malay Bantam breed with one variety, the Black-Breasted Red.

The Ornamental Bantam class includes the following standard breeds and varieties: Sebright—Golden, Silver. Rose Comb—White, Black. Booted—White. Brahma—Light, Dark. Cochin—Buff, Partridge, White, Black. Japanese—Black-Tailed, White, Black, Gray. Polish—Bearded White, Buff Laced, Non-Bearded White, Non-Bearded Buff Laced. Mille Fleur—Booted.

The Miscellaneous class includes the Silkie breed.

In addition to the standard breeds and varieties, bantam breeders are constantly developing and perfecting other bantam breeds. In

this bulletin, however, only the standard breeds and varieties are included.

THE GAME BANTAM

For each variety of the Game Bantam there is a corresponding variety of Game, often called Exhibition Game, and the bantam varieties are exact replicas of the larger varieties except in the matter of size.

In type the Game Bantam is distinct. It is racy in appearance, alert, and full of snappiness. For its weight the Game Bantam is tall, being set up high on its legs, which are long in both shank and thigh. The characteristic height and appearance of the Game Bantam are termed "station," and because this is so characteristic of the breed it is of great importance. The shank and the greater part of the thigh should show below the body.

The head should be long and slender. The comb is single and should be erect in the female and rather fine, while in the male it should be dubbed or cut off, failure in this respect being a cause of disqualification in cocks. The neck is long and slender. The body is well rounded, with the breast prominent and carried well up. The body when viewed from the side should present much the shape of an oxheart with the large end uppermost at the shoulders. The body when viewed from above should show great breadth at the shoulders and should taper down to the stern, forming a flatiron shape. The body and back line should slant down decidedly from the shoulders to the tail. The wings, which are short, should be held well up in place. The stern should be well tucked up without any tendency toward bagginess. From its shape the tail is called a whiptail. The tail should be closely folded, running to a point, and carried low, about on the horizontal. The legs must be straight and set wide apart, with bone of good size and quality but not coarse. The bone of the legs should be round, not flat.

The feathering of the Game Bantam is very characteristic. The feathers should be short, close, and hard, so that they fit the body closely. The hackle should be rather scanty, especially in front, while the saddle feathers should be short, the ends not extending below the underline of the body. Any tendency toward looseness of feathering is undesirable. The whole body should be hard muscled and firm. The ear lobes are red or purple.

The standard weights for Game Bantams are: Cock, 22 ounces; cockerel, 20 ounces; hen, 20 ounces; pullet, 18 ounces.

The **Black-Breasted Red Game Bantam** male has a general top color ranging from light golden or orange to red. The shoulders and the wing fronts are black, and there is a black bar extending across the wing which is formed by the black wing coverts. The primary wing feathers are almost entirely black, while the secondaries are black except for a part of the outer webs, which are bay. In front the neck, breast, body, and tail are black.

The female of this variety has a golden head and a hackle which is golden striped with black. The remainder of the top color is a grayish brown with a stippling of golden brown. The primary wing

feathers are black, and the tail is black except for the tail coverts and the two top main tail feathers, which are brown. The front of the neck and breast is salmon, this color gradually changing into the ashy-brown color of the body, thighs, and stern. The shanks and toes are willow or greenish yellow.

The **Brown Red Game Bantam** male has an orange head and a hackle and saddle, which are lemon, striped with dark. The back and the wing bows are also lemon, but the remainder of the wings and the tail are black. The front of the neck and the breast are black laced with lemon. The body, stern, and thighs are black.

The female of this variety has her entire plumage black except for the head, which is lemon striped with dark, and the front of the neck and breast, which are black laced with lemon. The shanks and toes are black.

The **Golden Duckwing Game Bantam** male has head, hackle, part of the outer webs of the secondary wing feathers and the outer webs of the lower primaries white. The wing bows, back, saddle, and smaller tail coverts are golden. The rest of the plumage is black.



FIG. 5.—Black-Breasted Red Game Bantam, female

The female of this variety has a silver-gray head with a silver-gray hackle striped with dark. The wings, except the primaries, which are brown, are gray with a darker-gray stippling, as are also the back and the two top main tail feathers. The rest of the tail is black. The front of the neck and the breast are salmon, while the body, stern, and thighs are gray, with an ashy tinge or cast. The shanks and toes are willow or greenish yellow.



FIG. 4.—Black-Breasted Red Game Bantam, male

The **Silver Duckwing Game Bantam** male has a general top

color of white, comprising the plumage of the head, hackle, wing bows, back, saddle, and lesser tail coverts. The outer webs of some of the lower primary wing feathers and part of the outer webs of the secondaries are also white. The rest of the plumage is black.

The female of this variety has a color which is very similar to that of the female of the Golden Duckwing variety. The head is silver gray and the hackle silver gray striped with black. Except for the primaries, which are black, the wings are light gray stippled with



FIG. 6.—Silver Duckwing Game Bantam, male FIG. 7.—Silver Duckwing Game Bantam, female

darker gray. The back and the two top main tail feathers are also light gray stippled with darker gray. The rest of the tail is black. The front of the neck and breast is salmon, running somewhat lighter in those sections than the Golden Duckwing female. The body, stern,



FIG. 8.—Birchen Game Bantam, female

FIG. 9.—Red Pyle Game Bantam, male

and thighs are gray with an ashy tinge or cast. The shanks and toes are willow or greenish yellow.

The Birchen Game Bantam has a color scheme exactly the same as that of the Brown Red Game Bantam except that wherever lemon or orange occurs in the plumage of either sex of the Brown Red variety

it is replaced by white in the Birchen variety. The shanks and toes of this variety are black.

The Red Pyle Game Bantam male has the head and hackle orange, the wing bows red, the outer webs of the lower primary feathers bay, part of the outer webs of the secondaries red, the back red, and the saddle orange. The front of the neck may also show some yellow tinge. The rest of the plumage is white.

In the female the head is gold, the hackle white edged with gold, the front of the neck white with some tinge of salmon, and the breast salmon. The remainder of the plumage is white. The legs and toes are yellow.

The White Game Bantam of both sexes has white plumage throughout, free from any foreign color whatever. The legs and toes are yellow.

The Black Game Bantam of both sexes has black plumage throughout, showing a green luster on the surface. The undercolor is dull black. The legs and toes of this variety are black.



FIG. 10.—Black-Breasted Red Malay Bantam, male



FIG. 11.—Golden Sebright, female

THE BLACK-BREADED RED MALAY BANTAM

In general appearance the Black-Breasted Red Malay Bantam resembles the Game Bantam to a considerable degree. It should have a long neck and should stand well up on its legs. The back and body slant downward rather decidedly from the shoulders to the tail. The tail is rather closely folded and should be carried in a drooping position or below the horizontal. The comb is rather small and is called a strawberry comb. The comb of the male in this breed should not be dubbed as in the Game Bantam. The head is of good size and has beetle brows, which give the bird a savage appearance. The breast should be prominent and carried well up. The legs should be long, strong, and set well apart. The ear lobes are red.

The standard weights for this breed are: Cock, 26 ounces; cockerel, 24 ounces; hen, 24 ounces; pullet, 22 ounces.

In the male the plumage of the head, hackle, wing bows, back, and saddle is red, which in some sections may shade to a lemon. The

outer webs of the primary wing feathers and part of the webs of the secondaries are bay. The rest of the plumage is black.

The general color of the plumage of the female is brown, which varies in different sections from an ordinary shade of brown to a cinnamon brown or even a very dark brown. The hackle is striped with black. The tail may be either very dark brown or black. The undercolor in both sexes is slate throughout with more or less of a brown tinge. The shanks and toes are yellow.

THE SEBRIGHT

The Sebright has been bred for many years and has been perfected to a high degree. In type this bird shows a remarkable smoothness and finish and is very attractive in appearance. The body is set rather low on short legs. The breast is prominent, the back short, and the tail large and well spread. The wings are also large and are carried low. A peculiar characteristic of this breed is the fact



FIG. 12.—Silver Sebright, male



FIG. 13.—Silver Sebright, female

that the shape and color of the feathers of the male are exactly like those of the female, or, in other words, the males are "hen-feathered." The comb is rose and of medium size with a spike which turns up only slightly in the rear. The color of the face and comb in both varieties should be a reddish purple. The wattles are red, and a reddish-purple color is desired for the ear lobes. The shanks and toes of both varieties are a bluish slate.

The standard weights for this breed are: Cock, 26 ounces; cockerel, 22 ounces; hen, 22 ounces; pullet, 20 ounces.

The Golden Sebright has a very beautiful plumage color, and since the males are "hen-feathered" the markings are alike in both sexes. The lacing in the Sebrights, in both the Golden and the Silver varieties, is excellent and is often cited as the most perfect lacing to be found in domestic fowl. The surface color of this variety is a golden bay with each feather laced around its entire margin with a narrow edging of black. The undercolor in both sexes is slate.

The Silver Sebright has a color scheme exactly the same as that of the Golden Sebright with the exception that wherever the feathers

are golden bay in the Golden variety this color is replaced by white in the Silver variety.

THE ROSE-COMB BANTAM

The Rose-Comb Bantam is a very attractive breed. The birds are very trim, neat, and symmetrically formed, and in type are really a miniature Hamburg. The legs are rather short, so that the body is comparatively low set. The breast is well rounded and prominent, and the back appears to be somewhat longer than in the Sebright. The wings are large and are carried low. The tail is also large, is profusely furnished, and is carried rather low. There is a smooth, unbroken curve or sweep of back and tail. The comb is rose, having a spike inclined upward in the rear like the Hamburg. The ear lobes are round, rather large and are white.

The standard weights of this variety are: Cock, 26 ounces; cockerel, 22 ounces; hen, 22 ounces; pullet, 20 ounces.

In the White variety the color of plumage of both sexes is white throughout, and this should be free from any foreign color whatever. The legs and toes are white.

In the Black variety the color of the plumage is black throughout with a greenish sheen on the surface and an undercolor of dull black. The legs and toes are black.

THE BOOTED WHITE BANTAM

The Booted White Bantam is called "booted" because the legs and toes are feathered. Owing to the booting it appears to be somewhat similar to the Mille Fleur, but in type it is set higher on the legs and is really somewhat more on the Langshan order. The comb is single and of medium size. The feathering is fairly abundant but not so profuse as in the Cochin. The wings are large, the back is short, the breast is full and well rounded, and the legs are rather long. The shank and toe feathering is heavy, extending down the outer sides of the shanks and along the outer toes. A characteristic of this breed is that it has vulture hocks; that is to say, the feathers above the hocks, instead of being soft and curling about that joint, are stiff and extend backward and downward from the hock. The ear lobe is red, while the legs and toes are white. The plumage of both sexes is white throughout and should be absolutely free from any foreign color. The Booted White is one of the rarer bantams.

The standard weights for this breed are: Cock, 26 ounces; cockerel, 22 ounces; hen, 22 ounces; pullet, 20 ounces.

THE BRAHMA BANTAM

The Brahma Bantams should be in type and color exact counterparts of the larger varieties of Brahmas. Brahma Bantams frequently tend to run rather large in size, and it is also difficult to secure the desired type coupled with small size. In type the body should be broad and deep and of fairly good length. The female appears somewhat lower set on the legs than the male. The tail should be carried moderately low. As with the large varieties, the

head should show a skull overhanging the eyes and should have a pea comb. The feathering, while abundant and rather loose, should not be so excessive as to destroy the smooth appearance of the fowl. The feathering extends down the outer side of the shank and along the outer and middle toes of each foot. Unlike the Booted White Bantam, this breed should show no tendency toward vulture hocks. The shanks are yellow or dusky yellow in color. The ear lobes are red.



FIG. 14.—White Rose-Comb Bantam, male



FIG. 15.—White Rose-Comb Bantam, female



FIG. 16.—Black Rose-Comb Bantam, male



FIG. 17.—Black Rose-Comb Bantam, female

The standard weights for this breed are: Cock, 30 ounces; cockerel, 26 ounces; hen, 26 ounces; pullet, 24 ounces.

The **Light Brahma Bantam** has very attractive coloring, which is practically the same as that of the various Columbian varieties of other breeds. In general the color is white, the hackle feathers being black edged with white, the main tail feathers black, the tail coverts black with distinct white lacings. The primary feathers of

the wing are nearly black and the secondary feathers about one-half black. However, when the wings are folded the black which is in them is hidden. The feathers on the shanks and outer toes are white and black, the black feathers being laced with white. The undercolor in both sexes is bluish slate, shading into a bluish white in the breast as the surface is approached.

The Dark Brahma Bantam has a very beautiful color pattern, the general color plan being the same as in the Silver Penciled variety of other breeds.

In the male of this variety the plumage consists of a silver-white top color extending over the shoulders and back, the hackle and saddle being striped with black. The rest of the body plumage, including the main tail feathers and sickles, is black. The wings when folded show a bar of black extending across below the shoulders. Below this black bar the wings show white, due to the white on the outside of the secondaries.



FIG. 18.—Light Brahma Bantam, male

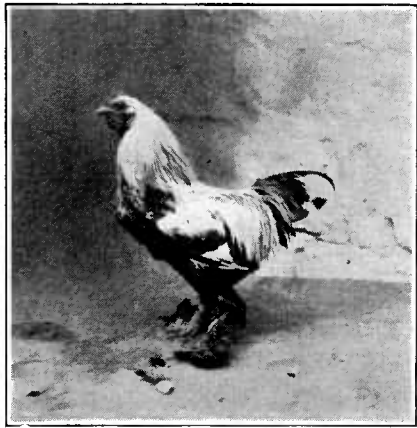


FIG. 19.—Dark Brahma Bantam, male

In the female the general trend of color is gray, each feather showing delicate, distinct, concentric dark penciling except the hackle, each feather of which is silvery white with a black center showing a slight gray penciling, and the main tail feathers, which are black, with the two top feathers showing some penciling. The undercolor is slate throughout in both sexes.

THE COCHIN BANTAM

The Cochin Bantam is exactly the same in type as the large Cochin, while the different varieties are identical in color with the corresponding larger varieties. The Cochin Bantam is particularly characterized by the nature of its feathers, which should be very heavy and very soft and loose, giving the bird a massive appearance for its size. The body is deep and appears to be rather round. The profuse feathering gives the bird the appearance of being set very low on its legs, the body feathering completely hiding the hock joints and filling the bird in well underneath. The heavy feathering has

developed a large cushion on the female, giving the hen the appearance of having a very short back and a convex sweep from the back to the end of the tail. The feathering extends down the outer sides of the shanks in profusion and covers the outer and middle toes, almost hiding the feet. There should be no tendency toward vulture hocks in this breed, the feathers about the hocks being soft and curving. The comb is single and of moderate size. The ear lobes are bright red.

The standard weights for this breed are: Cock, 30 ounces; cockerel, 26 ounces; hen, 26 ounces; pullet, 24 ounces.

The Buff Cochin Bantam should be as nearly as possible an even shade of golden buff throughout. Shafting, or the presence of feathers having a shaft of different color from the rest of the feathers, and mealiness, or the presence of feathers sprinkled with lighter color as though sprinkled with meal, are undesirable. As deep an undercolor of buff as it is possible to obtain is wanted. The

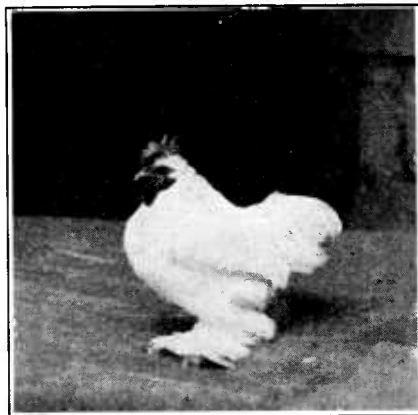


FIG. 20.—White Cochin Bantam, male



FIG. 21.—Black Cochin Bantam, male

shade of buff in the females runs somewhat lighter than that of the male. It is important that the shade of color be as even as possible over the entire surface. The shanks and toes are yellow.

The Partridge Cochin Bantam presents a very beautiful plumage color. In the male the plumage consists of a rich red top color extending over the shoulders and back, the hackle and saddle being striped with black. The rest of the body plumage, including the main tail feathers and sickles, is black. The wings when folded show a bar of black extending across below the shoulders. In the female of this variety the general trend of color is a brown or mahogany, each feather showing delicate, distinct, concentric dark penciling except the hackle, each feather of which is red or bay with a black center showing a slight penciling of brown, and the main tail feathers, which are black with the two top feathers showing some brown penciling. The undercolor in both sexes should be slate throughout. The color of legs and toes in this variety is yellow or dusky yellow.

The White Cochin Bantam of both sexes should have plumage that is white throughout, free from any foreign color. The surface

color should be free from brassiness, and there should be no creaminess in either surface or undercolor. The color of the shanks and toes is yellow.

The Black Cochin Bantam should have black plumage throughout in both sexes, a greenish sheen free from purple showing in the surface color, while the undercolor is a dull black. The color of the legs and toes is black or black and yellow.



FIG. 22.—Black-Tailed Japanese Bantam, male

FIG. 23.—Black-Tailed Japanese Bantam, female

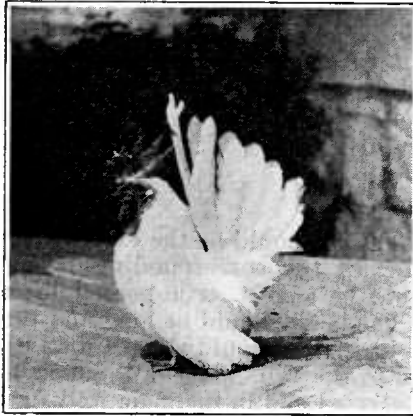


FIG. 24.—White Japanese Bantam, male

FIG. 25.—White Japanese Bantam, female

THE JAPANESE BANTAM

In type the Japanese Bantam is absolutely distinct from any of the other bantam breeds and presents an unusual but attractive appearance. The comb is single, large, and upright. The body is set on legs so short as to make the bird's body appear to be almost resting on the ground. The breast is very full and well rounded; the wings are large and carried low so that the points nearly if not quite reach the ground. The tail is large, well spread, and well

furnished, and is carried in the position known as squirrel tail—that is to say, it is so upright as to come forward beyond the perpendicular. In fact, the tail should almost touch the back of the neck. This carriage of tail results in a back which appears to be very short. The legs and toes are free from feathers and are yellow or yellowish black, depending on the variety. The ear lobes are red.

The standard weights for this breed are: Cock, 26 ounces; cockerel, 22 ounces; hen, 22 ounces; pullet, 20 ounces.

The Black-Tailed Japanese Bantam has a general plumage color of white, except that in the male the main tail feathers are black while the sickles and tail coverts are black edged with white, and in the female the main tail feathers are black except for the two top feathers and for the tail coverts, which have white edging. The wing appears to be white when folded, but when expanded shows black primaries edged with white and secondaries which are black with a white edge on the upper webs. The undercolor is white or blue white.

The White Japanese Bantam has white plumage throughout in both sexes and should be free from any foreign color.

The Black Japanese Bantam has black plumage throughout, showing a greenish sheen on the surface and a dull black in the undercolor.

The Gray Japanese Bantam male has a head of silver gray, the hackle being the same color but striped with dark. The wings are black except for the bows, which are white. The back is white and the saddle white striped with dark. The breast and the front of the neck are black laced with silver gray. The rest of the body and the tail are black.

The female has a white head and a white neck striped with black. The breast and the front of the neck are black laced with white, while the rest of the bird is black.

The undercolor in both sexes is a dark slate.

THE POLISH BANTAM

The different varieties of Polish Bantam should be the exact counterparts, both in type and in color, of the corresponding larger varieties. The Polish Bantam should be a neat, trim-bodied little fowl, set fairly well up on its legs. The body should be long and the breast well rounded. The body and back line should show a distinct slope downward from the shoulders to the tail. The tail, which is long and well spread, should be low-carried and in the male well furnished with sickles and coverts. The comb is small and V-shaped, being more or less hidden by the crest. The crest itself is a character which adds greatly to the beauty of this breed. It should be fairly large and bushy and should be set squarely on the head without any tendency to tip to one side. Some of the varieties are bearded while others are nonbearded. The beard consists of feathers growing on the throat of the fowl and well up to or behind the eyes. The ear lobes of all varieties of Polish Bantams are white. The legs and toes are slate blue in color.

The standard weights for this breed are: Cock, 26 ounces; cockerel, 22 ounces; hen, 22 ounces; pullet, 20 ounces.

The **Bearded White Polish Bantam**, as indicated by its name, is a bearded variety. The color of the plumage is a pure white throughout, free from any foreign color.

The **Buff-Laced Polish Bantam** is also a bearded variety. The plumage color in both sexes is buff laced with a paler buff, but the color of the male is somewhat richer or deeper than that of the female. The primary feathers of the female are plain buff without any lacing, while those of the male are laced with a paler buff on the outer ends only. Otherwise the color pattern of the male and female is identical. The undercolor of both sexes is a pale buff throughout.

The **Non-Bearded White Polish Bantam** and the **Non-Bearded Buff-Laced Polish Bantam** are identical with the corresponding bearded varieties except for the lack of the beard.



FIG. 26.—Bearded White Polish Bantam, male FIG. 27.—Non-Bearded White Polish Bantam, female

THE MILLE FLEUR BOOTED BANTAM

The **Mille Fleur Booted Bantam** is one of the rarer standard bantams in this country. In some respects it resembles the **Booted White Bantam**, particularly with respect to the fact that the legs are feathered and the hocks are vulture hocks. However, it is set lower on the legs than the **Booted White Bantam**. The back is short, the breast full and well rounded. The wings are large and carried low. The tail is long, well spread, and carried high. The legs are of medium length. The legs and toes are slate blue and the ear lobes are red. The comb is single and of medium size.

The **Mille Fleur Booted Bantam** may occur either bearded or nonbearded. The standard weights for this breed are: Cock, 26 ounces; cockerel, 22 ounces; hen, 22 ounces; pullet, 20 ounces.

In the male the general color scheme is a ground color of red or bay with the tip of each feather ending in a V-shaped white marking which is separated from the red or bay ground color of the feather by a black bar. The hackle, back, and saddle feathers, however, are red striped with black and tipped with white. The wing bows are red tipped with white and without the black bar. The primary

wing feathers are black edged with bay and white, while the secondaries are bay on the outer webs and black on the inner webs and are tipped with white. The tail, including the tail coverts and sickle feathers, is black tipped with white. The fluff is black mottled with white, and the shank and toe feathers are black with white tips.



FIG. 28.—Mille Fleur Bantam, male



FIG. 29.—Mille Fleur Bantam, female



FIG. 30.—Silkie, male



FIG. 31.—Silkie, female

In the female the general color scheme is bay with a white tip, as in the male, separated from the rest of the feathers by a black bar. The primary wing feathers are black, while the secondaries have their outer webs buff and their inner webs black tipped with white. The main tail feathers are black tipped with white, as are also the shank and toe feathers. The undercolor of both sexes is a slate throughout, which shades to a buff at the base of the feathers. When Mille Fleur

bantams are bearded the feathers of the male's beard are red tipped with white and those of the female buff tipped with white.

THE SILKIE

The Silkie is included in the miscellaneous class; and while larger than most of the other bantams, it is really too small to be included with standard varieties other than bantams, and for this reason is included in this publication. The only standard weights given are that the cock should not weigh more than 3 pounds and hens not more than 2 pounds.

This breed is unique among standard varieties. The most striking thing regarding it is its peculiarity of feathering. Instead of having the normal feathers such as are found on most fowl, the feathers are webless and have a peculiar texture which gives them a silky appearance and which is responsible for the name of this breed. In type these fowl are short, broad, and round. They are set rather low on short legs, and their profuse plumage helps to give them their ball-like appearance. The back should be broad and the breast prominent. The wings are comparatively small. The comb is rose and is practically round in shape. This breed has a crest of small or medium size. The shanks and the outer toes are feathered and there are 5 toes on each foot. The shanks and toes are leaden blue. Another peculiarity about the Silkie is the fact that the comb, face, and wattles are purple and the ear lobes are turquoise blue. The plumage is pure white in color throughout.

**ORGANIZATION OF THE
UNITED STATES DEPARTMENT OF AGRICULTURE**

September, 10, 1924

<i>Secretary of Agriculture</i> -----	HENRY C. WALLACE.
<i>Assistant Secretary</i> -----	HOWARD M. GORE.
<i>Director of Scientific Work</i> -----	E. D. BALL.
<i>Director of Regulatory Work</i> -----	WALTER G. CAMPBELL.
<i>Director of Extension Work</i> -----	C. W. WARBURTON.
<i>Solicitor</i> -----	R. W. WILLIAMS.
<i>Weather Bureau</i> -----	CHARLES F. MARVIN, <i>Chief</i> .
<i>Bureau of Agricultural Economics</i> -----	HENRY C. TAYLOR, <i>Chief</i> .
<i>Bureau of Animal Industry</i> -----	JOHN R. MOHLER, <i>Chief</i> .
<i>Bureau of Plant Industry</i> -----	WILLIAM A. TAYLOR, <i>Chief</i> .
<i>Forest Service</i> -----	W. B. GREELEY, <i>Chief</i> .
<i>Bureau of Chemistry</i> -----	C. A. BROWNE, <i>Chief</i> .
<i>Bureau of Soils</i> -----	MILTON WHITNEY, <i>Chief</i> .
<i>Bureau of Entomology</i> -----	L. O. HOWARD, <i>Chief</i> .
<i>Bureau of Biological Survey</i> -----	E. W. NELSON, <i>Chief</i> .
<i>Bureau of Public Roads</i> -----	THOMAS H. MACDONALD, <i>Chief</i> .
<i>Bureau of Home Economics</i> -----	LOUISE STANLEY, <i>Chief</i> .
<i>Bureau of Dairying</i> -----	C. W. LARSON, <i>Chief</i> .
<i>Fixed Nitrogen Research Laboratory</i> -----	F. G. COTTRELL, <i>Director</i> .
<i>Office of Experiment Stations</i> -----	E. W. ALLEN, <i>Chief</i> .
<i>Office of Cooperative Extension Work</i> -----	C. B. SMITH, <i>Chief</i> .
<i>Office of Publications</i> -----	L. J. HAYNES, <i>Director</i> .
<i>Library</i> -----	CLARIBEL R. BARNETT, <i>Librarian</i> .
<i>Federal Horticultural Board</i> -----	C. L. MARLATT, <i>Chairman</i> .
<i>Insecticide and Fungicide Board</i> -----	J. K. HAYWOOD, <i>Chairman</i> .
<i>Packers and Stockyards Administration</i> -----	} CHESTER MORRILL, <i>Assistant to</i> <i>the Secretary</i> .
<i>Grain Futures Administration</i> -----	

This bulletin is a contribution from

<i>Bureau of Animal Industry</i> -----	JOHN R. MOHLER, <i>Chief</i> .
<i>Division of Animal Husbandry</i> -----	L. J. COLE, <i>Chief</i> .